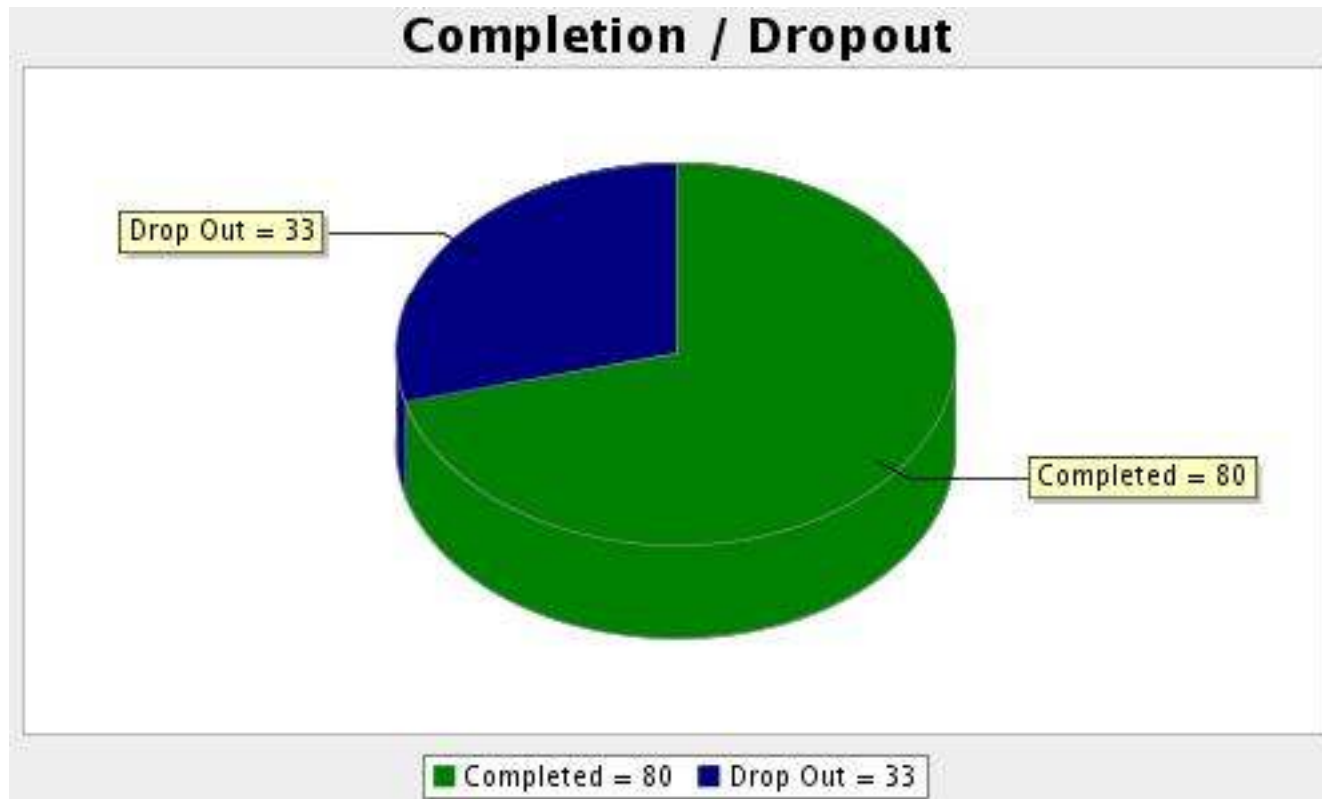
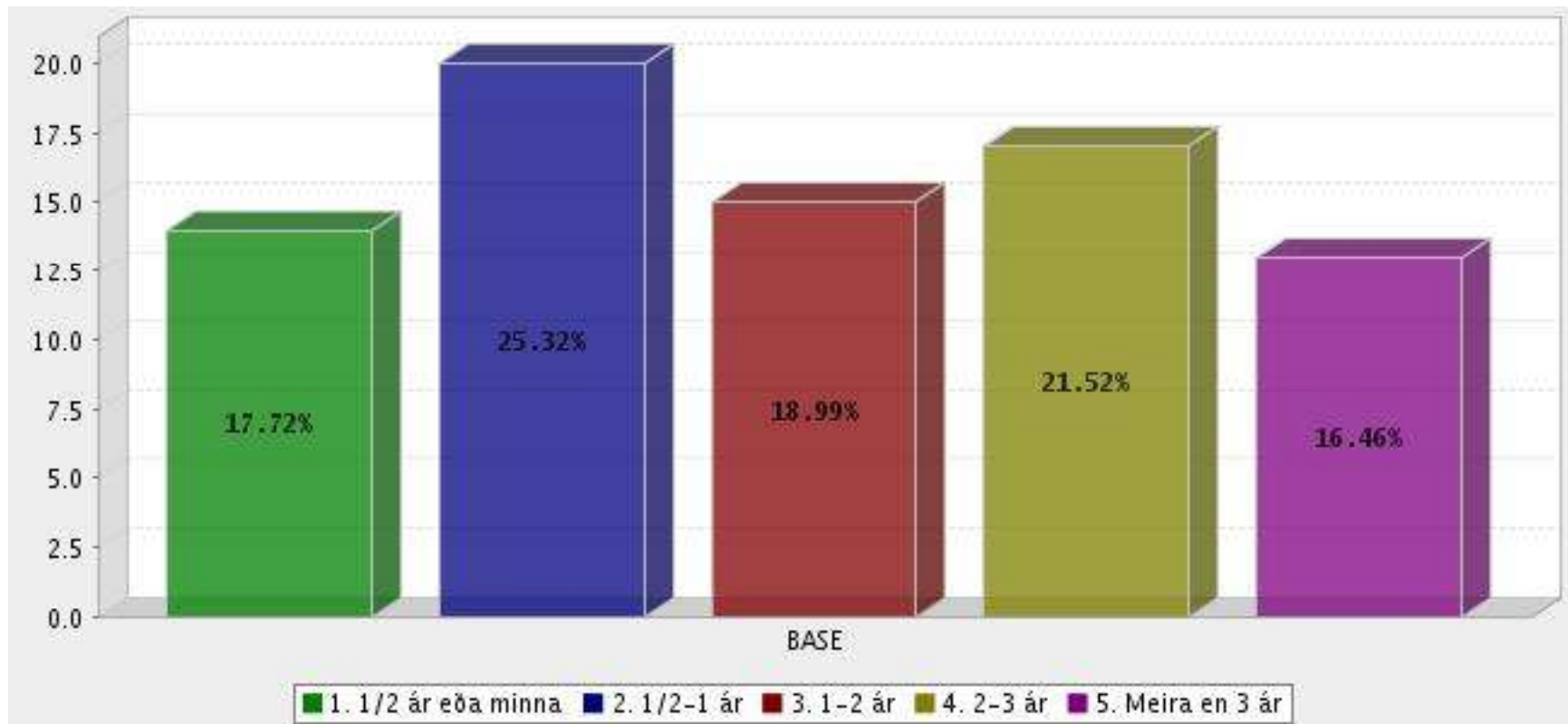


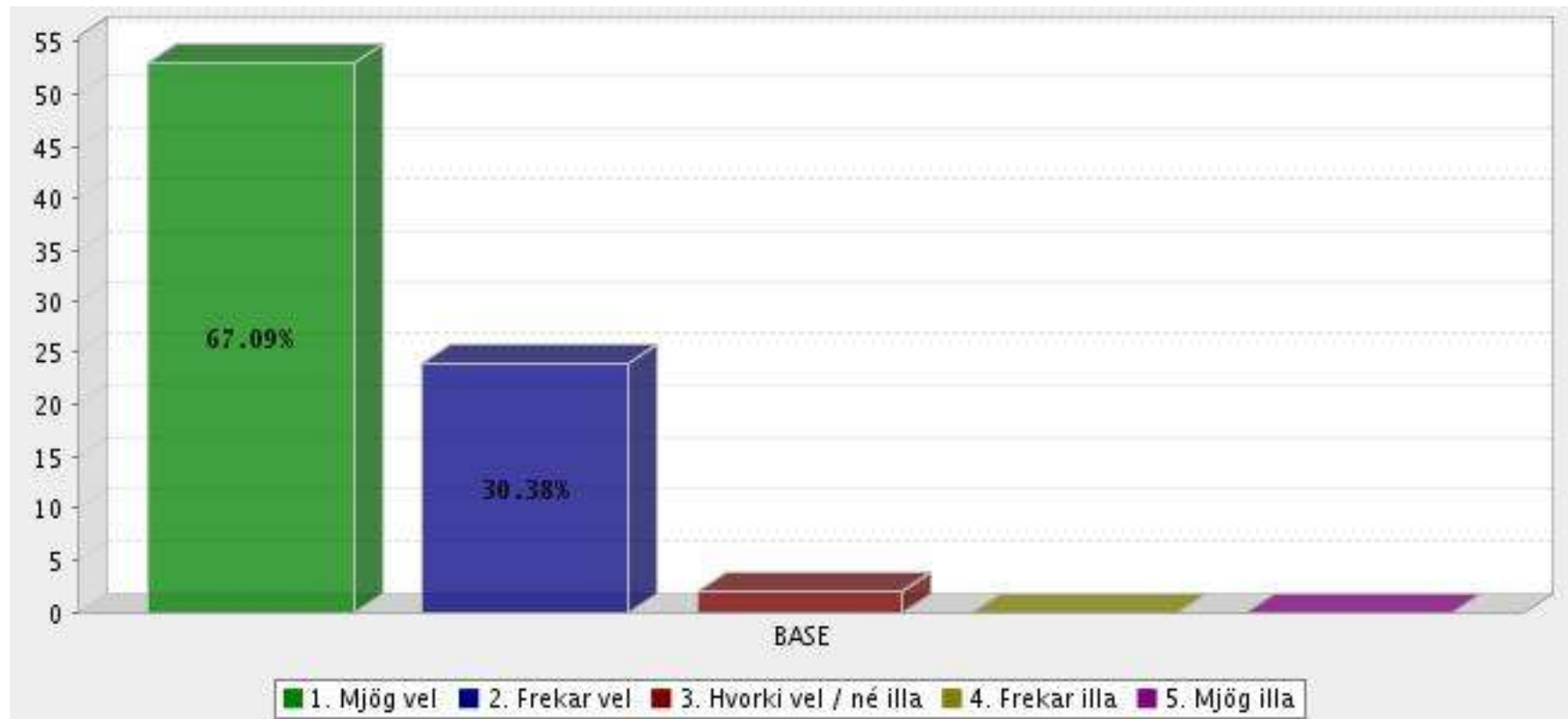
Foreldrakönnun á Norðurbergi 2013



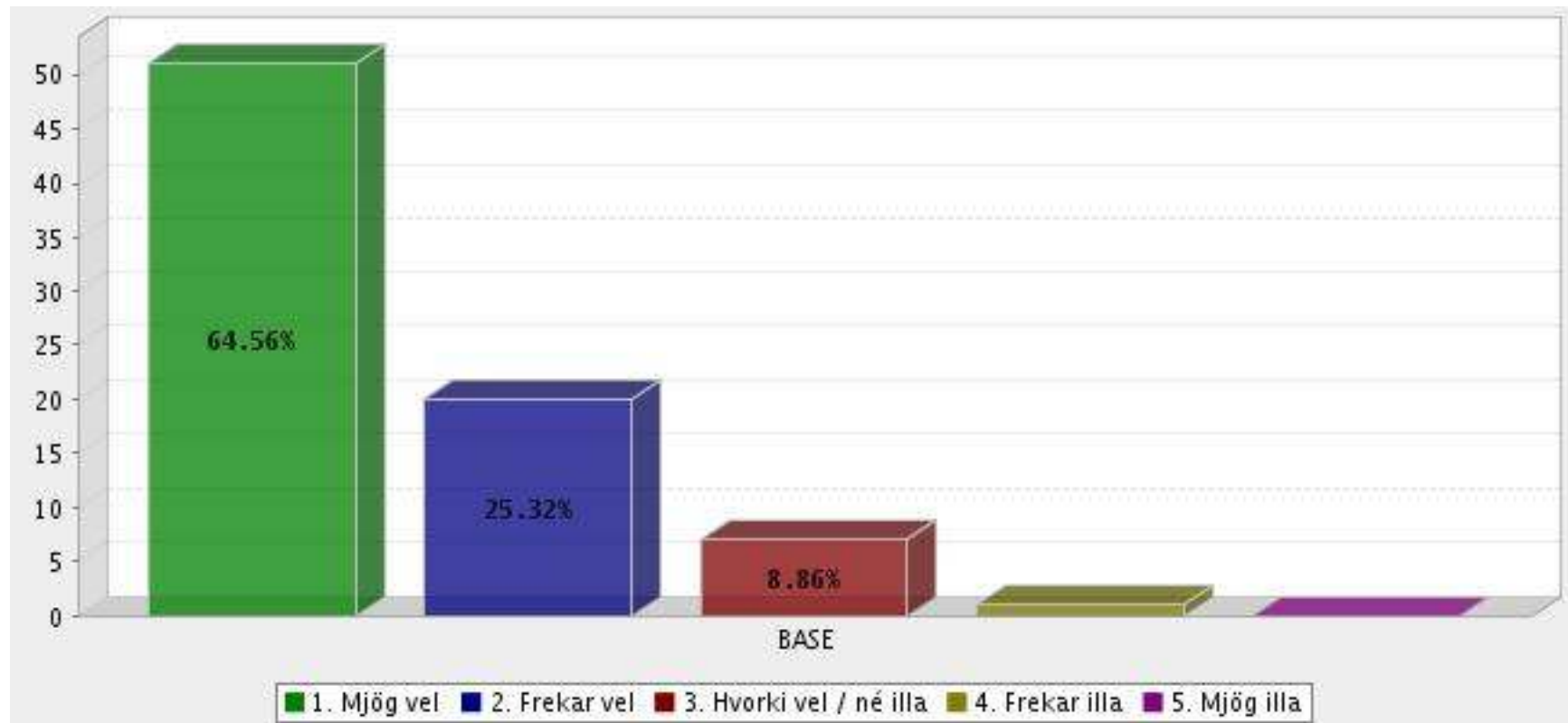
1. Hversu lengi hefur barnið stundað nám við leikskólann?



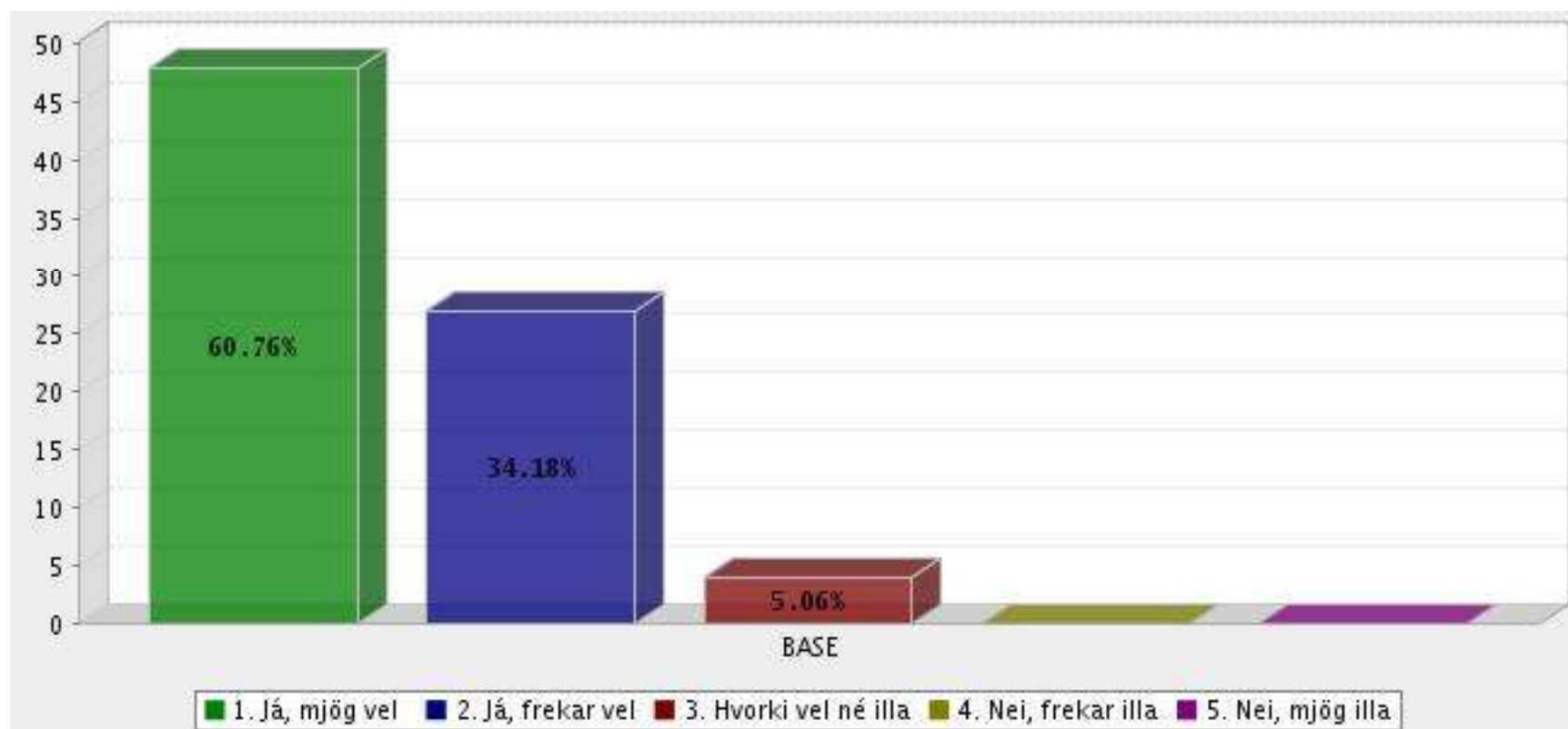
2. Hvernig líður barninu þínu almennt í leikskólanum?



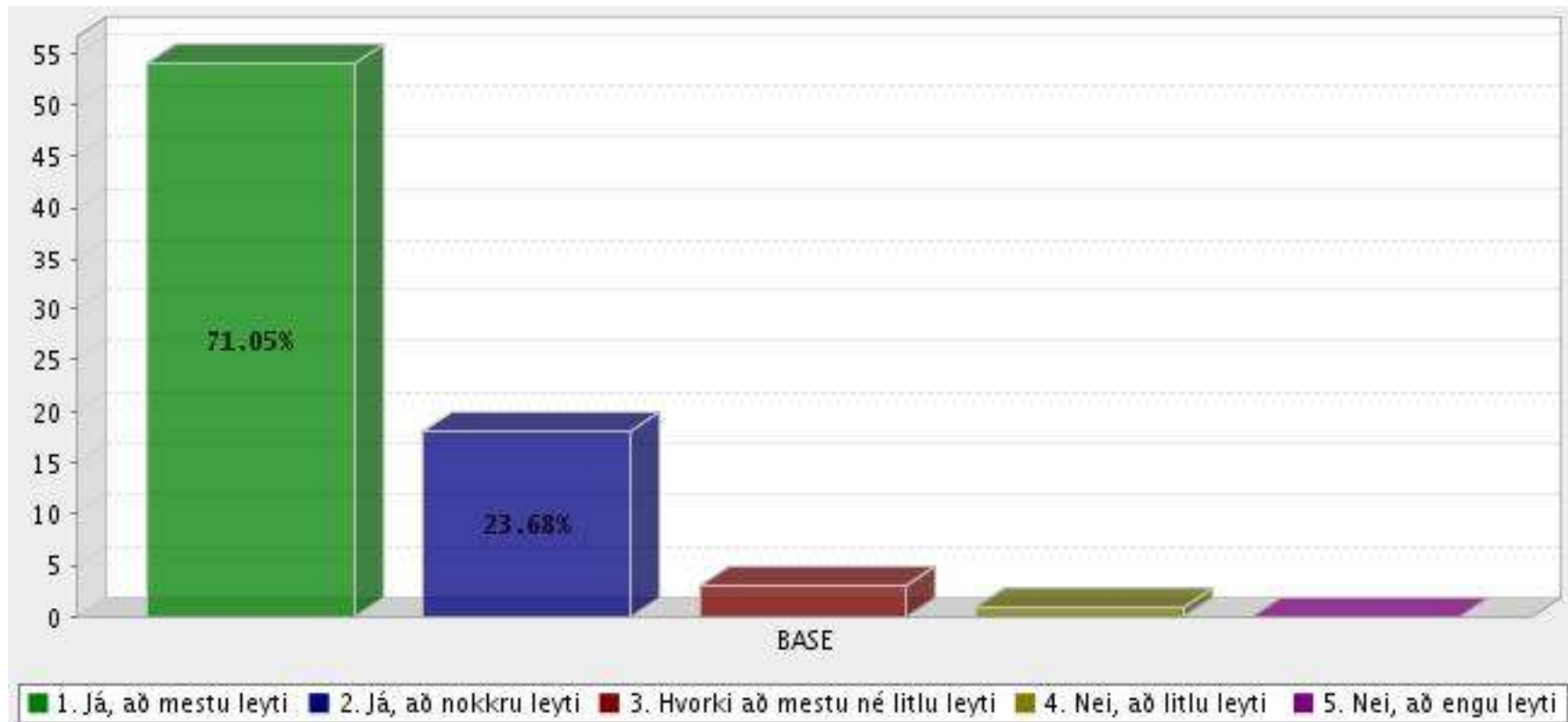
3. Hvernig gekk aðlögun barnsins þegar það byrjaði í leikskólanum?



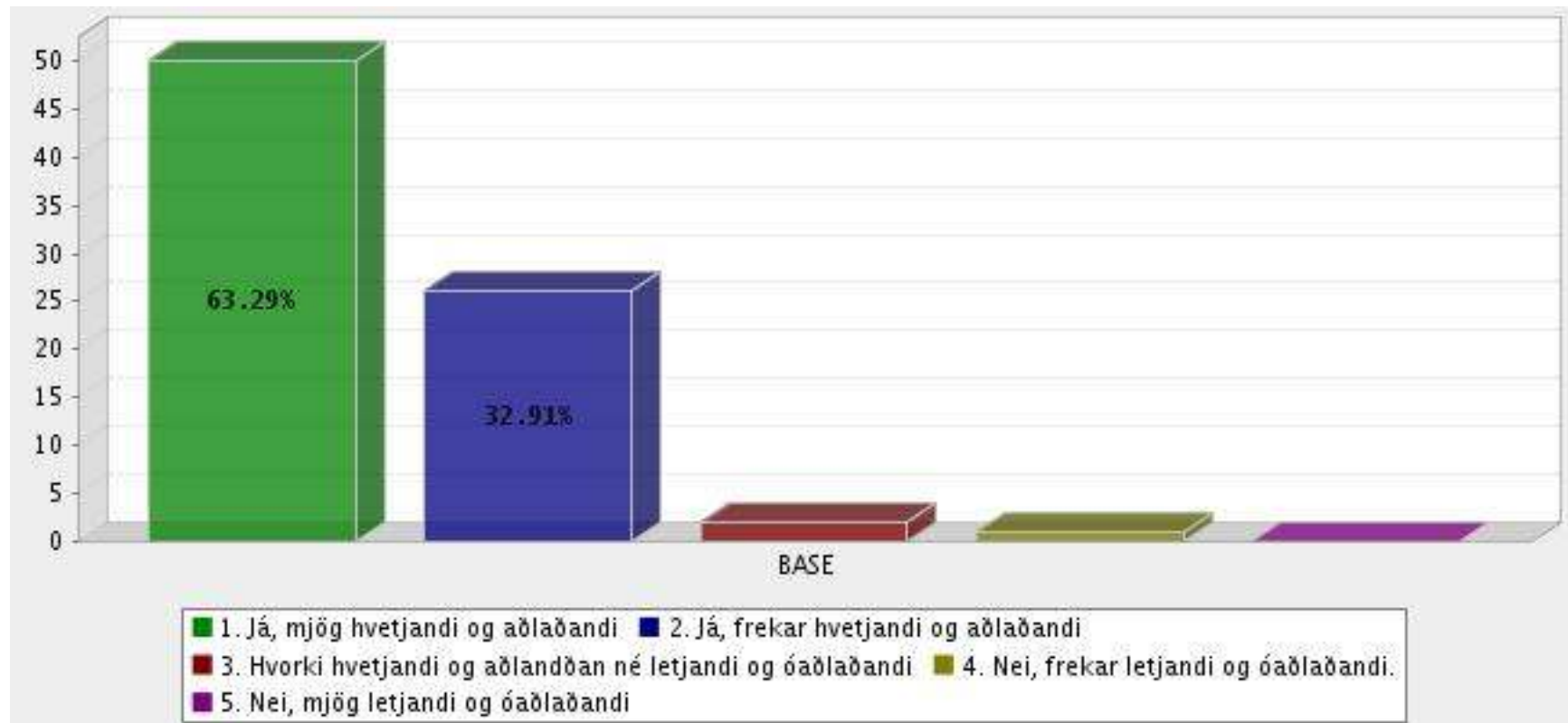
4. Standa starfsmenn leikskólans undir væntingum þínum varðandi dag...



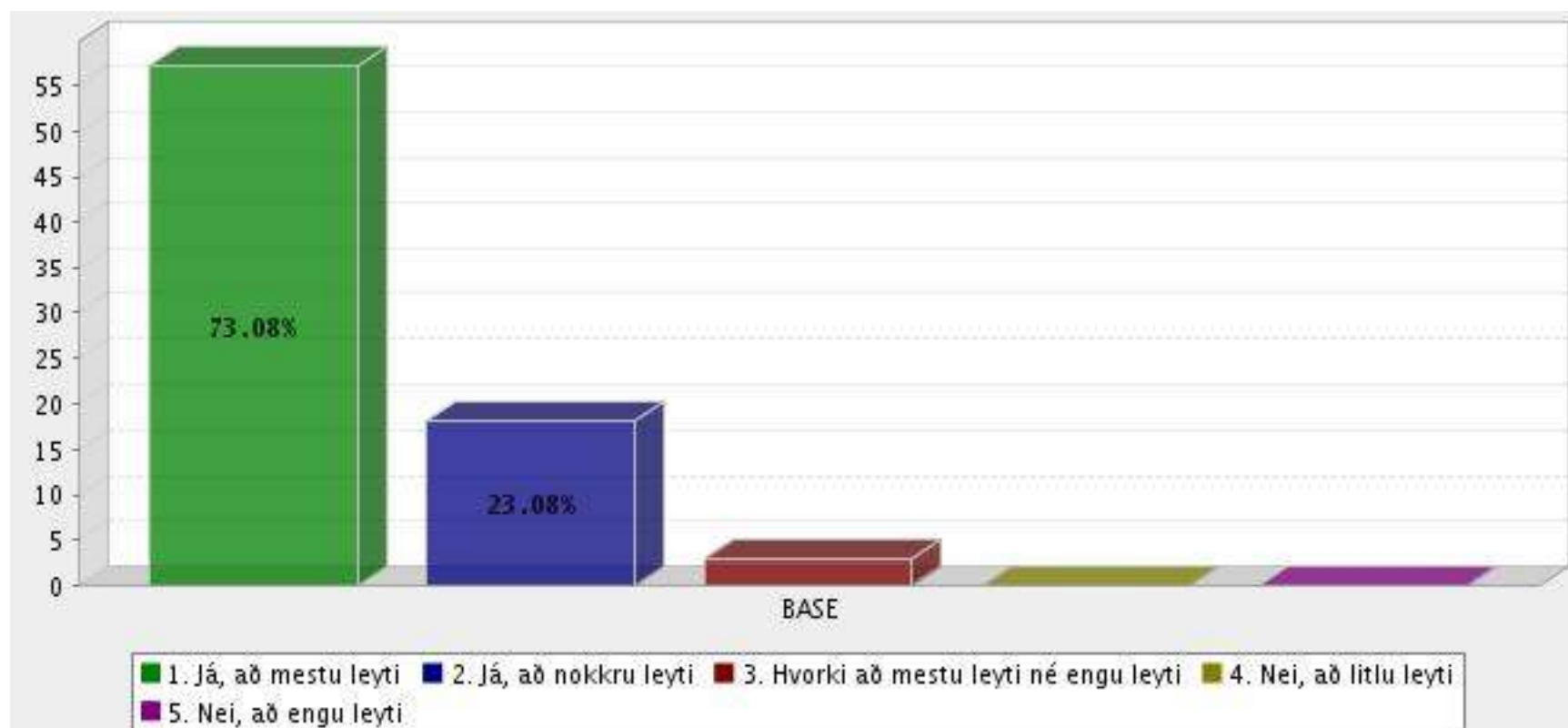
5. Telur þú að viðfangsefnin (til dæmis í tjáningu, hreyfingu, men...



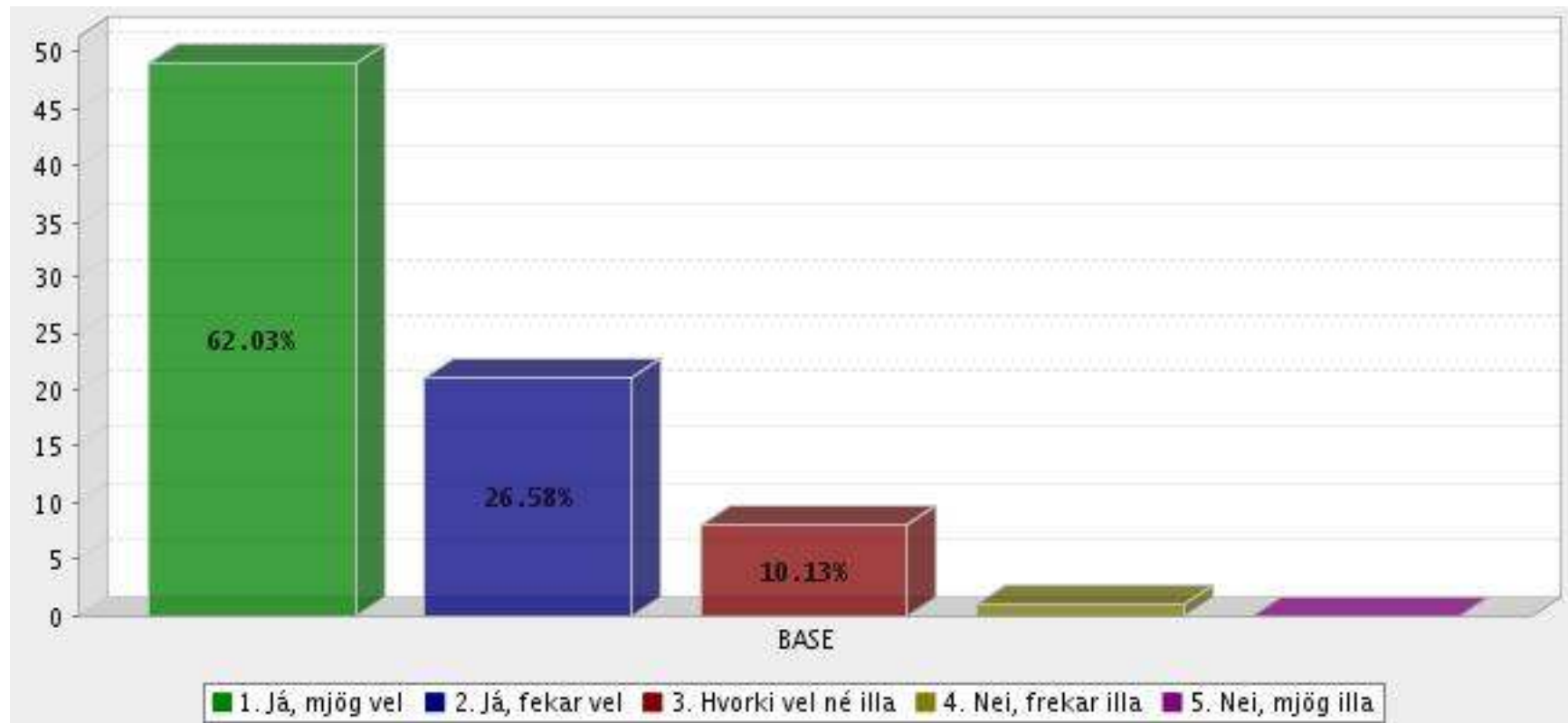
6. Telur þú að námsumhverfi barnsins (húsnæði og leikvöllur) sé hv...



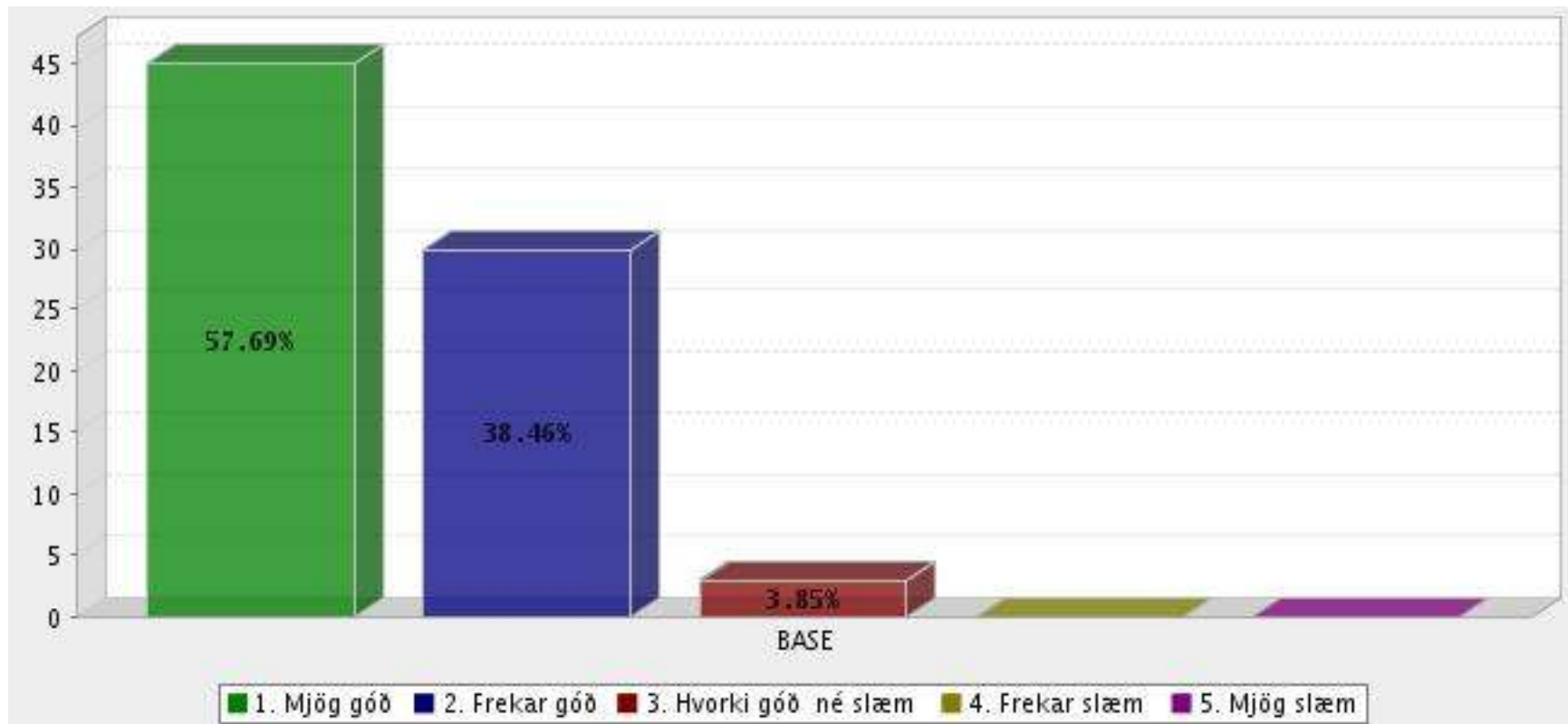
7. Telur þú að efniviðurinn (leikföngin/ kennslugögnin) sem barninu...



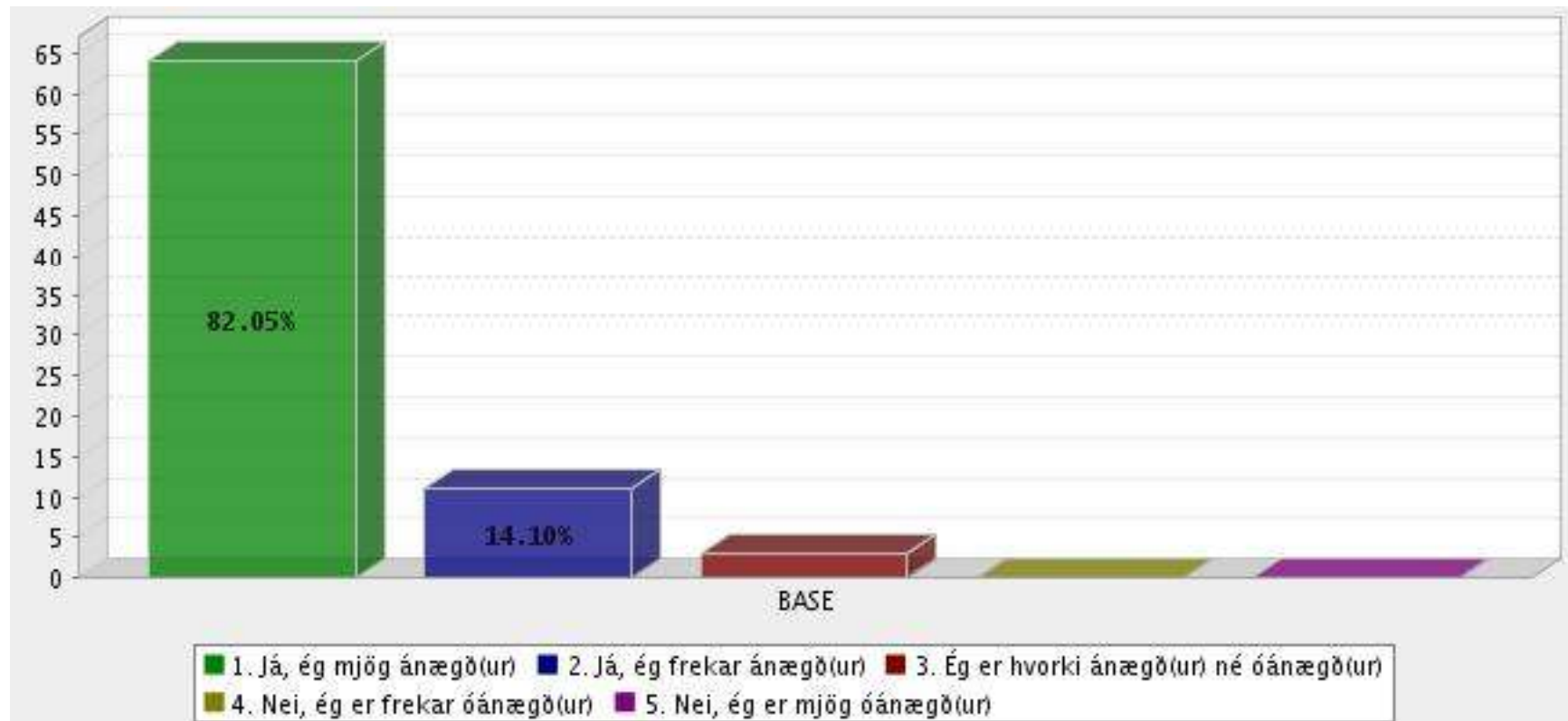
8. Upplýsir leikskólinn þig um uppeldis- og menntastarfið í leikskó...



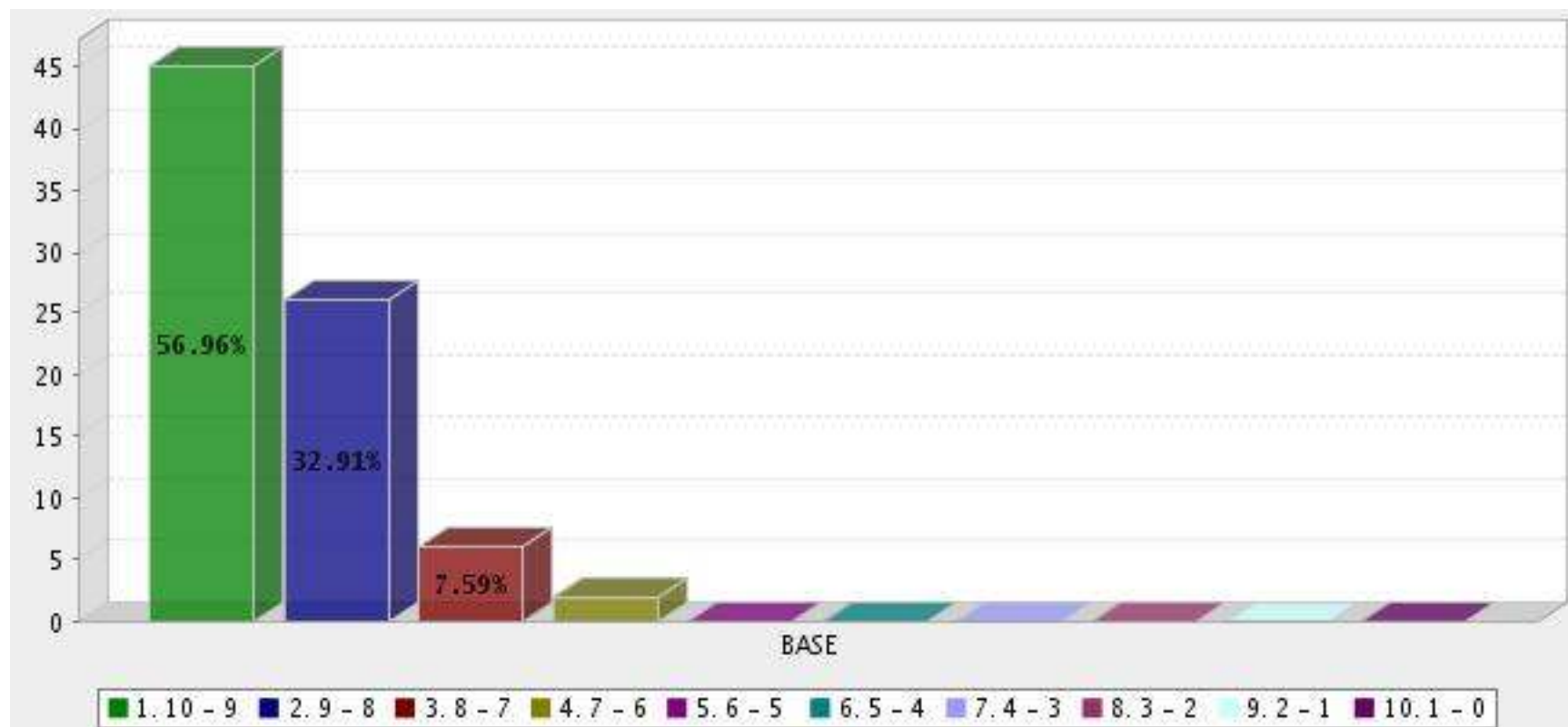
9. Hvernig eru samskipti þín við starfsmenn leikskólans?



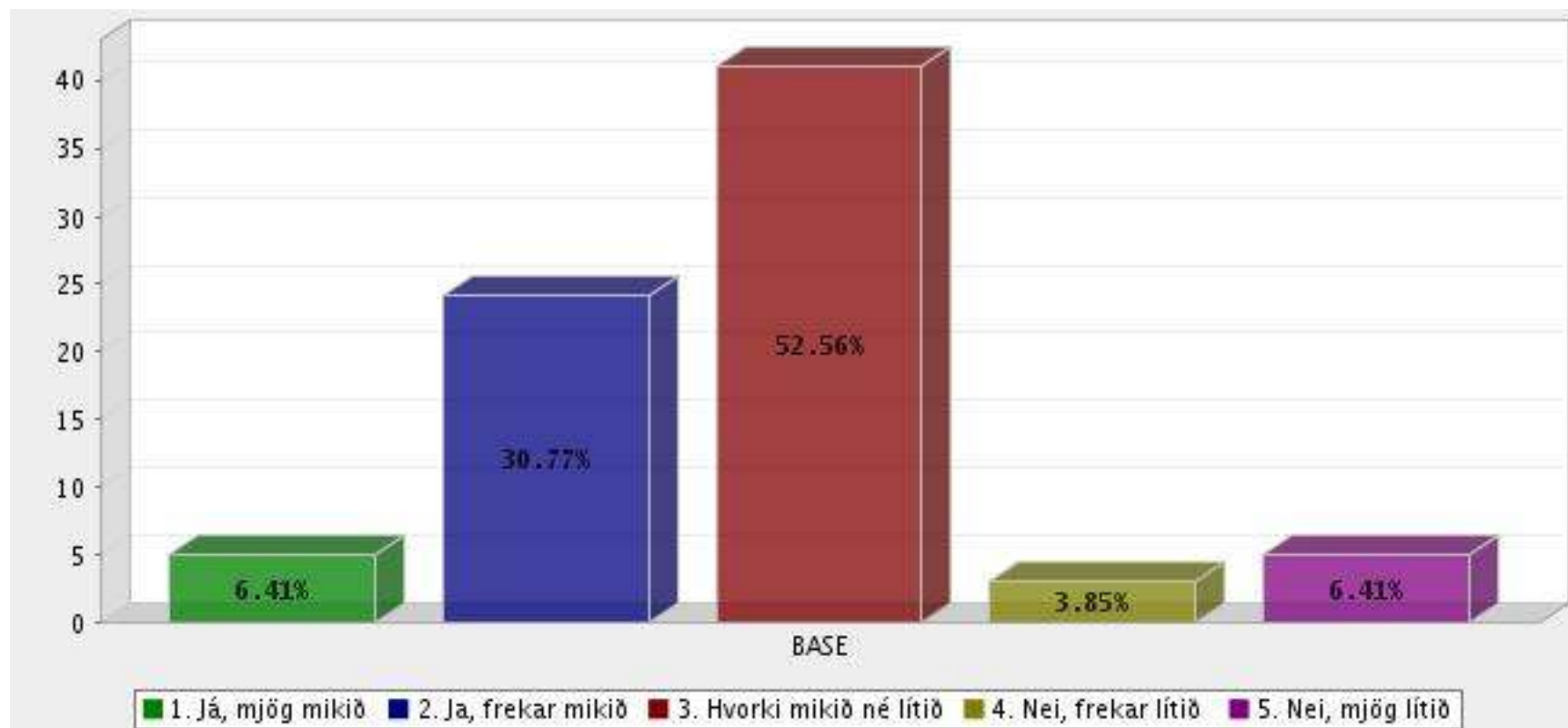
10. Ertu ánægð(ur) með hollustu matarins sem barninu stendur til bo...



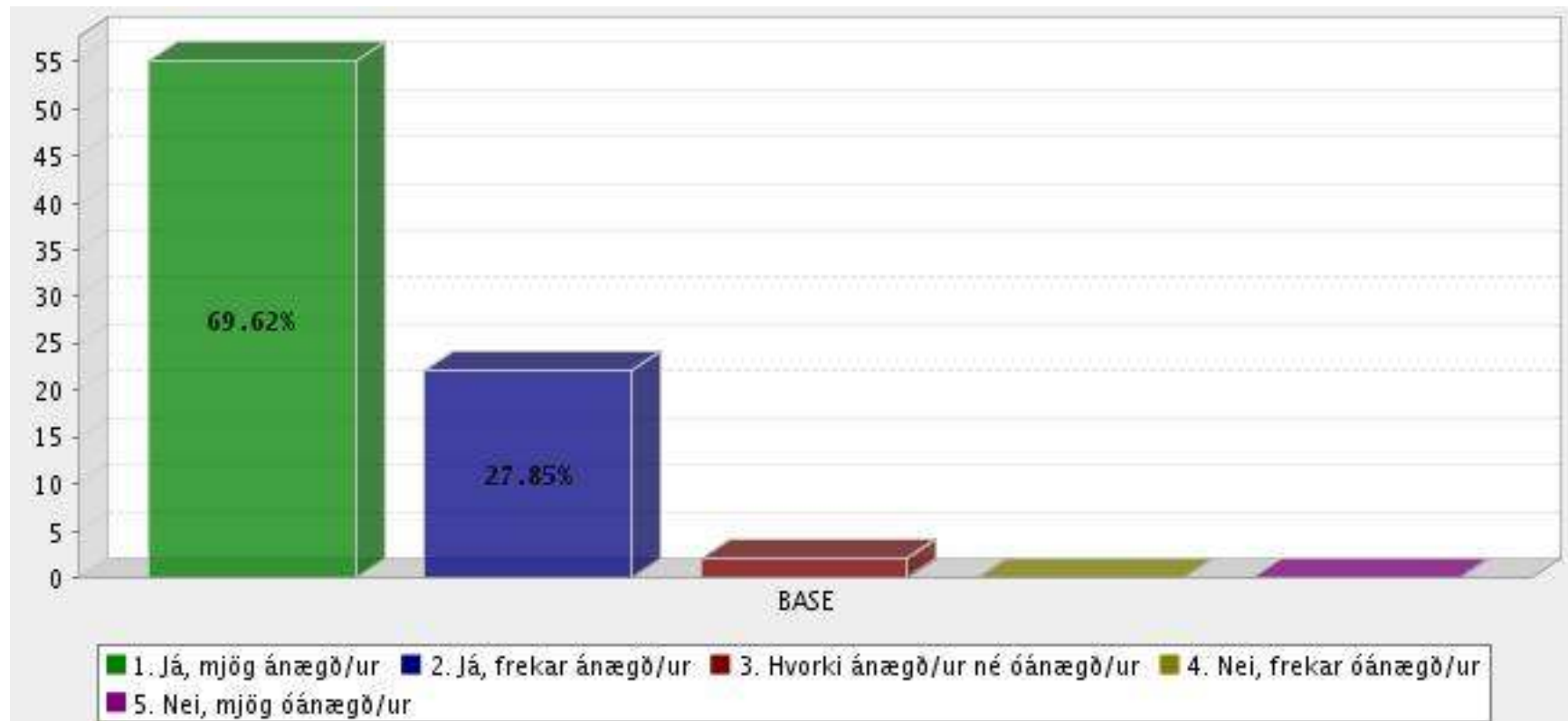
11. Hvaða einkunn gefur þú leikskólanum á kvarðanum 10-0? 10 - ...



Aukaspurningar frá Norðurbergi 13. Hefur fræðslan í umhverfis...



14. Ert þú ánægð/ur með útikennslu leikskólans?



15. Ert þú ánægð/ur með skógarferðir elstu barnanna?

